

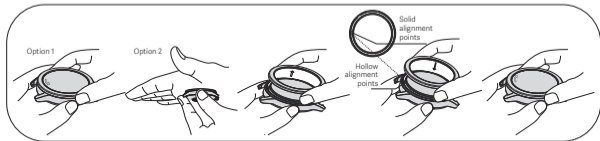


## **Xiaomi Watch Bezel User Manual**

Read this manual carefully before use, and retain it for future reference.

### Instructions for disassembling and assembling bezel

1. Press the edge of the bezel with your index finger and thumb, or press the bezel with your palm, and then turn it counterclockwise (about 20 degrees) with a gentle force to loosen it.
2. Pinch up and remove the bezel.
3. Match the alignment point inside the replacement bezel with the alignment point of the watch (at 12 o'clock position). Place the bezel horizontally and fasten it to the watch body.
4. To install the bezel, press the edge of the bezel with your index finger and thumb, or press the bezel with your palm and turn it clockwise with a gentle force until a "click" is felt when it is installed in place.



### Care & Maintenance

1. When dismantling the bezel counterclockwise, excessive force can damage the internal structure.
2. When reassembling the bezel clockwise, make sure the bezel is horizontally engaged with the watch body before turning it to avoid damaging the internal structure.
3. It is not recommended to wear a watch without the bezel installed to prevent skin scratches or wear on the internal structure.
4. The bezel contains magnetic components and is recommended to avoid strong magnetic environments. When charging, the watch face pop-up function triggered by installing the bezel will be invalid.
5. The alignment point on the back of the bezel must align with the alignment point at 12 o'clock position of the watch. The corresponding watch face can only be activated after proper installation.
6. Regular disassembly and assembly of the bezel may lead to the internal structure wearing out and becoming unable

to be tightened or loosened, which is a normal state. Please ensure proper disassembly and assembly frequency to extend the service life of the bezel.

#### **Model:**

① Stainless steel bezel: M2326AM1 ② Ceramic bezel: M2327AM1 ③ Forged carbon bezel: M2328AM1

#### **Warranty Notice**

As a Xiaomi consumer, you benefit under certain conditions from additional warranties. Xiaomi offers specific consumer warranty benefits which are in addition to, and not instead of, any legal warranties provided by your national consumer law. The duration and conditions related to the legal warranties are provided by respective local laws.

For more information about the consumer warranty benefits, please refer to Xiaomi's official website <https://www.mi.com/en/service/warranty/>.

Except as prohibited by laws or otherwise promised by Xiaomi, the after-sales services shall be limited to the country or region of the original purchase. Under the consumer warranty, to the fullest extent permitted by law, Xiaomi will, at its discretion, repair, replace or refund your product. Normal wear and tear, force majeure, abuse or damage caused by the user's negligence or fault are not warranted. The contact person for the after-sale service may be any person in Xiaomi's authorized service network, Xiaomi's authorized distributors or the final vendor who sold the products to you. If in doubt please contact the relevant person as Xiaomi may identify.

The present warranties do not Apply in Hong Kong and Taiwan.

Products which were not duly imported and/or were not duly manufactured by Xiaomi and/or were not duly acquired from Xiaomi or a Xiaomi's official seller are not covered by the present warranties. As per Applicable law you may benefit from warranties from the non-official retailer who sold the product. Therefore, Xiaomi invites you to contact the retailer from whom you purchased the product.

Manufactured by: Xiaomi Communications Co., Ltd.

Address: #019, 9th Floor, Building 6, 33 Xi'erqi Middle Road, Haidian District, Beijing, China, 100085 For further information, please go to [www.mi.com](http://www.mi.com)



PAP



711608080741

Importer:  
Beryko s.r.o.  
Pod Vinicemi 931/2, 301 00 Plzeň  
[www.beryko.cz](http://www.beryko.cz)



PAP

711608080741