

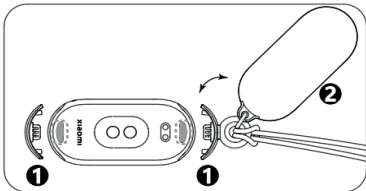
Xiaomi Smart Band 8 Pendant User Manual



Pendant installation and removal:

Installation:

1. Fit the quick-release metal accessory into the recessed areas of the band body.
2. Position the metal cover close to back of the band body to allow them to engage magnetically.



Removal:

1. Gently pull up the metal cover. Rotate to expose the back of the band body.
2. Press the quick-release buttons on both sides of the band body and pull the metal accessory to separate it from the band body.

Getting Started:

In the App or on the smart band, switch to the "Pendant" mode. Follow on-screen prompts to start recording steps and other data using the App.

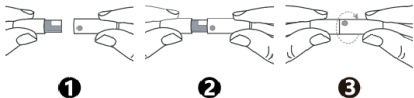
Note:

This mode does not record data such as heart rate, blood oxygen and calories.

Pendant necklace latch installation and removal

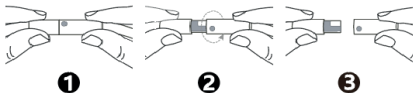
Installation:

1. Hold and install the two ends of the necklace latch as illustrated in the image below.
2. Align the recessed spot on the right side of the necklace latch with the groove on the left side and slide it in.
3. Whilst pressing both ends, rotate the right side of the necklace latch to fasten together.



Removal:

1. Hold the two ends of the necklace latch as illustrated in the image below.
2. Press and rotate the right side of the latch to unlock it.
3. Pull outwards to separate the two ends of the necklace latch.



Model: M2256AM1

Material: PC, stainless steel, wax cord

Warranty Notice

As a Xiaomi consumer, you benefit under certain conditions from additional warranties. Xiaomi offers specific consumer warranty benefits which are in addition to, and not instead of, any legal warranties provided by your national consumer law. The duration and conditions related to the legal warranties are provided by respective local laws. For more information about the consumer warranty benefits, please refer to Xiaomi's official website <https://www.mi.com/en/service/warranty/>.

Except as prohibited by laws or otherwise promised by Xiaomi, the after-sales services shall be limited to the country or region of the original purchase. Under the consumer warranty, to the fullest extent permitted by law, Xiaomi will, at its discretion, repair, replace, or refund your product. Normal wear and tear, force majeure, abuse, or damage caused by the user's negligence or fault are not warranted. The contact person for the after-sale service may be any person in Xiaomi's authorised service network, Xiaomi's authorised distributors or the final vendor who sold the products to you. If in doubt please contact the relevant person as Xiaomi may identify.

The present warranties do not Apply in Hong Kong and Taiwan.

Products which were not duly imported and/or were not duly manufactured by Xiaomi and/or were not duly acquired from Xiaomi or a Xiaomi's official seller are not covered by the present warranties. As per Applicable law you may benefit from warranties from the non-official retailer who sold the product. Therefore, Xiaomi invites you to contact the retailer from whom you purchased the product.

Manufactured by: Xiaomi Communications Co., Ltd.

Address: #019, 9th Floor, Building 6, 33 Xi'erqi Middle Road, Haidian District, Beijing, China, 100085 For further information, please go to www.mi.com

Importer:
Beryko s.r.o.
Pod Vinicemi 931/2, 301 00 Plzeň
www.beryko.cz

Made in China
V1.0



HQ62201000870
YT