

Mi Smart Electric Toothbrush T500

User Manual



Safety Instructions

When using the toothbrush for the first time, it may cause itch or minor gum bleeds. This is normal when the gums are not accustomed to the efficient cleaning of an electric toothbrush. It is recommended to use custom mode when your gums are not used to it yet. Normally, gum bleeds will stop within one to two weeks. Stop using the toothbrush and consult a dentist if it persists.

⚠ Warning

- Users undergoing orthodontic treatment, or users who have dental repairs or implants should consult their dentist or orthodontist before using this toothbrush.
- This toothbrush complies with the safety standards for electromagnetic devices. For any questions about using the device alongside pacemakers or other implanted devices, please consult a doctor or the manufacturer of the implanted device before use.
- This toothbrush is designed to clean teeth, gums, and tongue only. Do not use it for any other purposes. If you feel any discomfort or pain, stop using the toothbrush and consult your dentist.
- Do not immerse the charging dock in water or any other liquid.
- Do not plug the charging dock into an outlet when there is liquid on the plug.
- This toothbrush contains a built-in rechargeable battery, and should never be exposed to fire, nor charged, used, or stored in a high-temperature environment.
- Do not hit or drop the toothbrush. If it is damaged due to impact or dropping, stop using it.
- Do not attempt to modify, disassemble or repair the toothbrush by yourself.
- Use a charger complying with IPX4 or above only for charging.

⚠ Precautions

- Check the toothbrush for obvious damage before using it. Do not use it, if it is severely damaged.
- Make sure the local power supply's voltage matches the rated voltage input of the toothbrush's power adapter, before plugging it in.
- Do not use the charging dock outdoors in direct sunlight.
- Do not use the toothbrush while bathing or showering.

- Do not share the brush head with others.
- Do not wrap the power cord around the charging dock while it is plugged into an outlet.
- Do not place any metal objects on top of the charging dock while it is plugged into an outlet.

Note: Illustrations of the product, accessories, and user interface in the user manual are for reference purposes only. The actual product and functions may vary due to product enhancements.



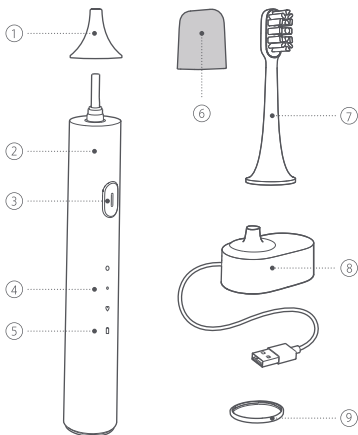
Hereby, SOOCAS (Shenzhen) Technology Co., Ltd., declares that the radio equipment type MES601 is in compliance with Directive 2014/53/EU. The full text of the EU declaration of conformity is available at the following internet address: <http://www.mi.com/global/service/support/declaration.html>

All products bearing this symbol are waste electrical and electronic equipment (WEEE as in directive 2012/19/EU) which should not be mixed with unsorted household waste. Instead, you should protect human health and the environment by handing over your waste equipment to a designated collection point for the recycling of waste electrical and electronic equipment, appointed by the government or local authorities. Correct disposal and recycling will help prevent potential negative consequences to the environment and human health. Please contact the installer or local authorities for more information about the location as well as terms and conditions of such collection points.



Product Overview

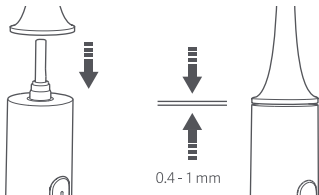
Read this manual carefully before use, and retain it for future reference.



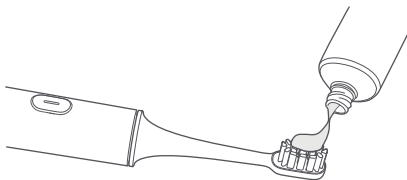
- | | |
|--------------------------|--------------------------------------|
| ① Shaft Protection Cover | ⑤ Bluetooth/Battery Level Indicator |
| ② Toothbrush Handle | ⑥ Brush Head Cover |
| ③ On/Off Button | ⑦ Brush Head |
| ④ Mode Indicator | ⑧ Charging Dock |
| • Standard Mode | ⑨ Colored Ring (Easy to distinguish) |
| • Gentle Mode | |
| ▼ Custom Mode | |

How to Use

1. Make sure that the brush head is installed in the same direction as the front of the toothbrush handle, and make sure there is a slight gap in between the brush head and the handle. The gap is required to avoid collision of the brush head with the handle during high-frequency oscillation, so as to generate more power from the motor.



2. Wet the brush head and squeeze a proper amount of toothpaste onto the brush head.



3. Turning on/Turning off/Switching modes



Turning on: Press the button to turn on the toothbrush.

Switching modes: Press the button, within 10 seconds after turning on the toothbrush.

Pause: Press and hold the button for 1 second to pause, the toothbrush will turn off automatically after being paused for 30 seconds.

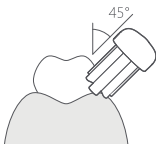
Turning off: Press the button once to turn off while in ♥ custom mode, within 10 seconds after turning on the toothbrush.

When your toothbrush is running for more than 10 seconds, simply press the button to turn it off.

Note: Press and hold the button for 12 seconds to restore factory settings. Please synchronize your data with the app to prevent data loss before restoring factory settings.

4. Healthy Brushing

- Hold the brush head at an angle of 45° to the gum line, and slowly move it along the teeth and gum line.
- While brushing, the toothbrush pauses briefly every 30 seconds, to prompt the user to change the brushing position.
- When there is no active pause during use, the toothbrush will automatically turn off once the brushing mode ends (brushing mode can be set via the app).



- The toothbrush is equipped with an overpressure protection system that detects pressure in real-time. When using too much pressure during teeth brushing, the battery level indicator will quickly blink red, and the toothbrush will automatically reduce vibration.
- Three brushing modes are available:
 Standard Mode: Suitable for daily oral hygiene
 Gentle Mode: Suitable for sensitive teeth
 Custom Mode: A 2-minute beginner mode by default. Its brushing settings and duration can be adjusted via the app.

5. Cleaning the brush head

- After brushing, rinse the brush head with running water.
- After rinsing, put on the brush head with the protective cover to keep it clean and hygienic.

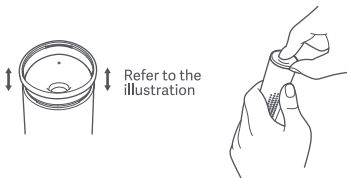


- Dentists recommend replacing the brush head every three months.
6. This toothbrush comes with 3 colored rings (gray, blue, green), which can be replaced according to your preference.



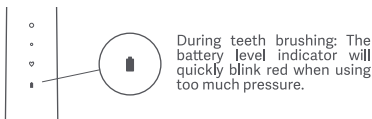
Illustration of correct alignment of colored ring

- Hold the toothbrush upside down with one hand, and use a nail on your other hand to remove the colored ring.
- Align the triangular shape of the colored ring (while the pins on the inside of the ring face down) with the triangular bottom of the toothbrush handle, and press it into place.



Smart Functions

1. The toothbrush is equipped with an overpressure protection system that detects pressure in real-time. When using too much pressure during teeth brushing, the battery level indicator will quickly blink red, and the toothbrush will automatically reduce the vibration.



2. You can set the brushing duration, mode, and splash protection via the Mi Home app/Xiaomi Home app. After finishing brushing, you can view the data and generate a report.
3. Connecting with Mi Home/Xiaomi Home App
 - This product works with Mi Home/Xiaomi Home app*. Control your device with Mi Home/Xiaomi Home app.

- Scan the QR code to download and install the app. You will be directed to the connection setup page if the app is installed already. Or search "Mi Home/Xiaomi Home" in the app store to download and install it. Open Mi Home/Xiaomi Home app, tap "+" on the upper right, and then follow prompts to add your device.
- * The app is referred to as Xiaomi Home app in Europe (except for Russia). The name of the app displayed on your device should be taken as the default.



- Note: The version of the app might have been updated, please follow the instructions based on the current app version.

Environmental Protection

When the toothbrush reaches the end of its service life, the built-in battery needs to be removed, disposed of, and recycled in accordance to local laws and regulations of the country or region it is used in.

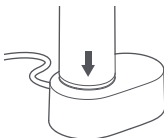
Specifications

Name: Mi Smart Electric Toothbrush T500 Model: MES601	
Rated Voltage: 3.7 V ==	Rated Power: 2 W
Rated Input: 5 V == 0.5 A	Charging Time: 12 hours
Maximum Output Power: 0 dBm	Battery Capacity: 700 mAh
Frequency Bands: 2402–2480 Mhz	IP Rating: IPX7
Brush Head Dimensions: 24.6 x 24.6 x 85.0 mm	
Toothbrush Handle Dimensions: 28.1 x 28.3 x 187.5 mm	

Charging

Toothbrush Status	Battery Level Indicator Status	Battery Level
Using	Cyan	100%-60%
	Orange	60%-20%
	Red	20%-10%
	Quickly blinking red (Toothbrush cannot be turned on)	<10%
Charging	Cyan	100%
	Slowly blinking cyan	100%-60%
	Slowly blinking orange	60%-20%
	Slowly blinking red	<20%

- The charging dock of the toothbrush is designed for the T500 and is not compatible with other products.
- When the battery is low, the indicator is quickly blinking red, and the toothbrush cannot be turned on. It takes about 10 to 16 hours to fully charge the toothbrush.
- When the toothbrush is in charging, connecting it with the app will turn the battery level indicator into blinking blue three times. After successfully connected, the indicator of the toothbrush stays blue. It will automatically disconnect with the app after your data completing synchronization, and the indicator of the toothbrush will display the current battery level. In case the toothbrush fails to connect with the app, the indicator stays unchanged, that is displaying the current battery level.



Troubleshooting

Issue	Possible Causes	Solutions
Unable to turn on by pressing button	Charging	Remove the toothbrush from the charging dock
	Bluetooth is connected	Disable the Bluetooth of your phone
	Battery level is too low	Place the toothbrush on the charging dock to charge
Unable to install the brush head onto the shaft	There is something stuck inside the brush head	Use a tool to remove the object from the brush head
	There is something stuck on the shaft	Clean the shaft
	Not a genuine brush head	Replace it with a genuine brush head
Excessive power consumption and charging frequently	Paired to the phone via Bluetooth for a long time	Disable Bluetooth when not using the toothbrush
	Used too frequently	Place the toothbrush on the charging dock to charge
Brush head vibration is weak	Brush head is not installed properly	Reinstall the brush head
	There is something stuck between the brush head and the handle	Remove the brush head and remove the object
Unable to connect to the app	The Bluetooth of your phone is not enabled	Enable the Bluetooth of your phone and control it via the Mi Home app/ Xiaomi Home app
	Toothbrush is too far away from the phone	Place the phone near the toothbrush
	Toothbrush is vibrating	Turn off the toothbrush and try to connect again

For further information, please go to www.mi.com
Manufactured for: Xiaomi Communications Co., Ltd.
Manufactured by: SOOCAS (Shenzhen) Technology Co., Ltd.
(a Mi Ecosystem company)
Address: Room 1101, 1102, 1103, 1104, 401 & 402, Building 2, Chong-
wen Area, Nanshan iPark, No. 3370 Liuxian Avenue,
Nanshan District, Shenzhen, China

Importer:
Beryko s.r.o.
Na Roudné 1162/76, 301 00 Plzeň
www.beryko.cz